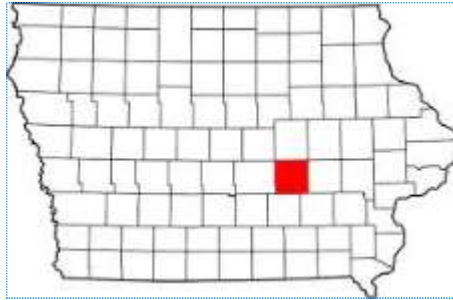


COMMUNITY HEALTH STATUS REPORT

Poweshiek County, Iowa 2013



Demographics

The population of Poweshiek County was estimated to be 18,736 in 2012, and had a - 0.9% change in population from 2010-2012.¹

The county covers 584.93 square miles and this area is home to Bucksbaum Center for the Arts, Grinnell College, and Poweshiek County Fairgrounds.¹ The county has an overall population density of 32.3 persons per square mile, compared to the State average of 54.5 persons per square mile.¹

The county is located in central Iowa and its economy is based on Educational, health, and social services (25.6%), Manufacturing (20.4%).² The county was founded in 1843 and the county seat is Montezuma.³

The major highway transportation in Poweshiek County is: Interstate 80, U.S. Highway 6, U.S. Highway 63, Iowa Highway 21, Iowa Highway 85, and Iowa Highway 146.⁵

Homeownership in Poweshiek County is 75.2% and is higher than the state average of 73.0%. Median price of an owner-occupied home in Poweshiek County is \$114,600 as compared to the state median value of \$121,300.¹

Employment in Poweshiek County resulted in a median household income of \$52,413 from 2007-2011 versus the state median household income of \$50,451.¹

¹ <http://quickfacts.census.gov/qfd/states/19/19157.html>

² http://www.city-data.com/county/Poweshiek_County-IA.html

³ <http://www.naco.org/Counties/Pages/FindACounty.aspx>

⁴ <http://iwin.iwd.state.ia.us/pubs/etables/unemploymentrates.pdf>

⁵ <http://goo.gl/maps/kgV4j>

DEMOGRAPHICS CONTINUED.....

People QuickFacts	Poweshiek County	Tama County	Iowa
Population, 2012 estimate	18,736	17,536	3,074,186
Population, 2010 (April 1st), estimates Base	18,914	17,767	3,046,857
Population, % change, April 1, 2010 to July 1, 2012	-0.9%	-1.3%	0.9%
Population, 2010	18,914	17,767	3,046,355
Persons under 5 years, %, 2012	5.3%	5.9%	6.4%
Persons under 18 years, %, 2012	20.6%	25.0%	23.5%
Persons 65 years and over, % 2012	19.2%	18.8%	15.3%
Female persons, %, 2012	50.9%	50.9%	50.4%
White alone, %, 2012 (a)	95.6%	88.9%	92.8%
Black or African American alone, %, 2012 (a)	1.2%	0.6%	3.2%
American Indian & Alaskan Native alone, %, 2012 (a)	0.3%	7.4%	0.5%
Asian alone, %, 2012 (a)	1.5%	0.4%	2.0%
Native Hawaiian & Other Pacific Islander alone, %, 2012 (a)	0.1%	0.1%	0.1%
Two or More Race, %, 2012	1.4%	2.5%	1.6%
Hispanic or Latino, %, 2012 (b)	2.6%	7.9%	5.3%
White alone, not Hispanic or Latino, %, 2012	93.4%	83.6%	88.0%
(a) Includes persons reporting only one race.			
(b) Hispanics may be of any race, so also are included in applicable race categories			
Living in same house 1 year & over, %, 2007-2011	84.1%	90.6%	84.3%
Foreign born persons, %, 2007-2011	2.2%	3.0%	4.2%
Language other than English spoken at home, %, Age 5+, 2007-2011	4.3%	11.4%	7.0%
High school graduate or higher % of persons age 25+, 2007-2011	92.6%	88.7%	90.3%
Bachelor's degree or higher % of persons age 25+, 2007-2011	23.1%	16.0%	24.9%
Veterans, 2007-2011	1,579	1,525	239,229
Mean travel time to work (minutes) Workers age 16+, 2007-2011	18.5	21.3	18.6
Housing units, 2011	8,944	7,756	1,340,529
Homeownership rate, 2007-2011	75.2%	77.6%	73.0%
Housing units in multi-unit structures, %, 2007-2011	15.9%	8.3%	18.5%
Median value of owner-occupied housing units, 2007-2011	\$114,600	\$96,200	\$121,300
Household, 2007-2011	7,675	7,041	1,219,137
Persons per household, 2007-2011	2.25	2.46	2.41
Per capita money income in the past 12 months (2011 dollars), 2007-2011	\$25,472	\$24,089	\$26,110
Median household income, 2007-2011	\$52,413	\$48,836	\$50,451
Persons below poverty level, %, 2007-2011	11.6%	11.1%	11.9%

Business QuickFacts	Poweshiek County	Tama County	Iowa
Private nonfarm establishments, 2011	548	341	80,113
Private nonfarm employment, 2011	8,669	3,533	1,263,665
Private nonfarm employment, % change, 2010-2011	-4.3%	-0.1%	0.8%
Nonemployer Establishments, 2011	1,269	1,184	202,971
Total number of firms, 2007			
Total number of firms, 2007	1,781	S	259,931
Black-owned firms, %, 2007	F	S	0.8%
American Indian and Alaska Native-owned firms, % 2007	F	S	0.2%
Asian-owned firms, %, 2007	F	S	1.1%
Native Hawaiian & Other Pacific Islander - owned firms, %, 2007	F	S	0.1%
Hispanic - owned firms, %, 2007	F	S	0.9%
Women-owned firms, %, 2007	21.4%	S	25.5%
Manufacturer's shipments, 2007 (\$1000)			
Manufacturer's shipments, 2007 (\$1000)	462,194	01	97,592,051
Merchant wholesaler sales, 2007 (\$1000)			
Merchant wholesaler sales, 2007 (\$1000)	118,099	154,880	41,068,338
Retail sales, 2007 (\$1000)			
Retail sales, 2007 (\$1000)	241,342	112,481	39,234,649
Retail sales per capita, 2007			
Retail sales per capita, 2007	\$12,932	\$6,366	13,172
Accommodation and food service sales, 2007, (\$1000)			
Accommodation and food service sales, 2007, (\$1000)	17,021	D	4,737,719
Building permits, 2012			
Building permits, 2012	18	19	9,501

Geography QuickFacts	Poweshiek County	Tama County	Iowa
Land area in square miles, 2010	584.93	721.01	55,857.13
Persons per square mile, 2010	32.3	24.6	54.5

D: Suppressed to avoid disclosure of confidential information

F: Fewer than 25 firms

NA: Not available

S: Suppressed; does not meet publication standards

PUBLIC SCHOOLS HEALTH DELIVERY PROFILE: Currently school districts are providing on site primary health screenings and basic care.

	Indicators - Local Schools	Grinnell	Montezuma	Brooklyn	South Tama
1	Total # Public School Nurses	2	1	0	2
2	School Nurse if part of the IEP team	Yes	Yes	No	Yes
3	School Wellness Plan in place (Active)	Yes	Yes	No	Yes
4	VISION: # screened/Referred to Prof/Seen by Professional	1643/95	220/1/0	No Screening	31/23/23
5	HEARING: # Screened/Referred to Prof/Seen by Professional	627/29/29	30/4/4	51/NA/NA	543/12/12
6	ORAL HEALTH: Screened/Referred to Prof/ Seen by Professional	157/16/NA	72/20/NA	65/13/NA	169/9/NA
7	SCOLIOSIS: Screened/Referred to Prof/Seen by Professional	806	0/0/0	No Screening	No Screening
8	# of students served with no identified chronic health concerns	508	526	No data Available	647
9	School has a suicide prevention program	Yes	No	No	No
10	Compliance on required vaccinations	99.0%	99.0%	96.6%	99%

MATERNAL AND INFANT HEALTH PROFILE: Tracking maternal & infant care patterns are vital in understanding the foundation of family health.

#	Indicators Vital Stats	Poweshiek	Tama	Iowa
1	Total Live Births, 2006	187	226	40,592
2	Total Live Births, 2007	213	211	40,835
3	Total Live Births, 2008	184	235	40,221
4	Total Live Births, 2009	191	205	39,662
5	Total Live Births, 2010	207	211	38,514
6	Births Occurring to Teens (Mothers under 20)	16	21	3,137

#	* Kid counts Data 2011	Poweshiek	Tama	Iowa
1	Births with Prenatal Care in First 3 Months	85.5%	77.7%	84.8%
2	% of Mothers who Smoke any time During Pregnancy	NA	NA	24.0%
3	% of Births with Low Birth Weight	6.6%	9.4%	6.5%
4	% of Births Occurring to Unmarried Women	37.2%	46.0%	33.0%
5	Children Receiving WIC (%) 2011	28.9%	30.6%	26.9%

HOSPITALIZATION / PROVIDER PROFILE: Understanding provider access and disease patterns are fundamental in healthcare delivery. Listed below are several vital county statistics

#	IA Hospital Assoc PO - IP	Grinnell Regional - Poweshiek Only		
		Yr2010	Yr2011	Yr2012
1	Total Discharges	1,105	1,071	942
2	Total IP Discharges - Age 0-17	134	142	109
3	Total IP Discharges - Age 18-44	198	195	175
4	Total IP Discharges - Age 45-64	177	169	180
5	Total IP Discharges - Age 65-74	124	131	124
6	Total IP Discharges - Age 75+	382	434	354

#	IA Hospital Assoc PO - IP	Poweshiek County (Total)		
		Yr2010	Yr2011	Yr2012
1	Total Discharges	2,006	2,024	1,962
2	Total IP Discharges - Age 0-17	283	267	250
3	Total IP Discharges - Age 18-44	407	372	357
4	Total IP Discharges - Age 45-64	408	438	484
5	Total IP Discharges - Age 65-74	323	314	313
6	Total IP Discharges - Age 75+	585	633	558

#	GRMC Utilization	YR2010	YR2011	YR2012
1	Total Inpatient discharges (all zips)	1,466	1,381	1,305
2	Total Emergency Visits	9,196	9,653	9,808
3	Total Outpatient Visits	47,837	50,707	48,399
4	Total Clinic (Physician) visits	6,693	7,118	11,413

UNINSURED PROFILES: Based on state estimations, the number of insured is documented below.

#	Percentages of Uninsured Population (2007)	Poweshiek	Tama	Iowa	CAH 13
1	% Uninsured (<65)	10.4%	12.3%	10.8%	17.0%

Source: 2011 Iowa Health Fact Book

#	Charity Care by Individual Hospital	YR10	YR11	YR12
1	Local Hospital Charity Care (Bad Debt-No pay)	\$1,910,055	\$1,450,567	\$1,540,936
2	Local Hospital Charity Care (Free Care)	\$400,257	\$548,709	\$540,362

MORTALITY PROFILE: The leading causes of county deaths are listed below.

Causes of Death by County of Residence, IA 2010				
Selected Causes of Death (ICD-10)		Poweshiek	Tama	Iowa
Total		468	390	61907
1	Major Cardiovascular Diseases	88	49	9,090
2	Diseases of Heart	62	39	6,851
3	Malignant Neoplasms, Including Neoplasms of Lymphatic and Hematopoietic Tissues	39	53	6,394
4	Ischemic Heart Disease	47	28	5,026
5	All Other Diseases	27	36	4,014
6	Other Forms of Chronic Ischemic Heart Disease	33	20	3,515
7	All other forms of Chronic Ischemic Heart Disease	16	15	2,466
8	Cerebrovascular Diseases	21	6	1,515
9	Alzheimer's Disease	6	20	1,421
10	Malignant Neoplasms of Digestive Organs and Peritoneum	12	10	1,615
11	Acute Myocardial Infarction	14	8	1,482
12	Atherosclerotic Cardiovascular Disease	17	5	1,049
13	Other Heart Diseases	13	8	1,481
14	Unintentional Injuries	11	10	1,292
15	Chronic Lower Respiratory Diseases	9	11	1,692
16	Other Chronic Lower Respiratory Diseases	9	10	1,559
17	Malignant Neoplasms of All Other and Unspecified Sites	4	13	831
18	Malignant Neoplasms of Respiratory and In- trathoracic Organ	5	11	1,784
19	All other Unintentional Injuries	7	7	883
20	Diabetes Mellitus	5	7	742

SOCIAL & REHAB SERVICES PROFILE: Behavior health and rehabilitation care provide another important indicator of community health status.

Social & Psychiatric Services - Clinical Data (LIMITED)

POWESHIEK COUNTY	YR 2011	YR 2012
Mental Illness	\$44,016	\$198,769
Chronic Mental Illness	\$63,542	\$221,540
Mental Retardation	\$78,662	\$667,569
Developmental Disability	\$17,394	\$45,120
Total	\$323,692	\$1,139,972
TAMA COUNTY	YR 2011	YR 2012
Mental Illness	\$265,118	\$3,366,569
Chronic Mental Illness	\$265,712	\$7,281,889
Mental Retardation	\$849,578	\$20,099,436
Developmental Disability	\$172,149	\$1,137,999
Total	\$1,648,542	\$32,669,751

Source: Dhs.state.ia.us/mhdd/statistical_info/county_dataservices

HEALTH RISK PROFILE: knowing community health risk factors and disease patterns can aid in the understanding “next steps” to improve health. Being overweight/obese; smoking; drinking in excess, not exercising etc. can lead to poor health.

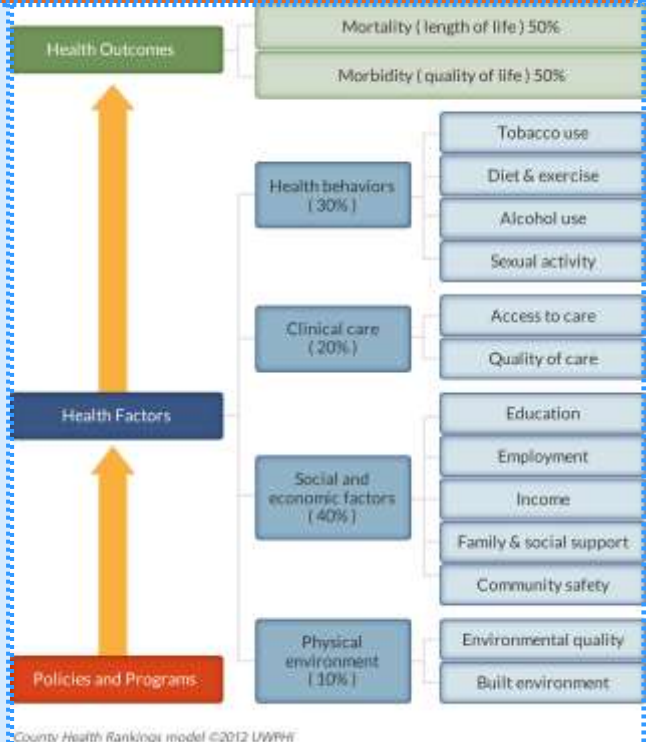
#	Countyhealthrankings.org	Poweshiek	Tama	Iowa	CAH 13
1	Adult Obesity	31%	26%	29%	32%
2	Adult Smoking	18%	18%	19%	18%
3	Excessive Drinking	18%	23%	20%	12%
4	Inadequate social support	12%	19%	12%	16%
5	Physical Inactivity	26%	30%	25%	28%
6	Poor mental health days	2.5	2.2	2.7	2.7
7	Poor physical health days	2.7	2.8	2.8	2.9



County Health Rankings & Roadmaps

A Healthier Nation, County by County

The Robert Wood Johnson Foundation collaborates with the University of Wisconsin Population Health Institute to release annual County Health Rankings. As seen in the model to the Right, these rankings are based on a number of health factors.



IA HEALTH RANKINGS: According to the 2013 Robert Wood Johnson County Health Rankings study.....

- **Poweshiek County's highest State of Iowa ranking (of 99 counties)** was in Clinical Support-Access to Care / Quality of Care (17th) and lowest ranking was Social and Economic Factors (43rd). **Tama County's highest ranking was in Mortality (27th)** and lowest ranking was in Clinical Care (75th)

IA Health Rankings

- The population in both Poweshiek and Tama County saw slight decreases from 2005-2009.
- Median household income in Poweshiek (\$52,413) and Tama (\$48,836) was on par with state norms.
- Poweshiek County has an unemployment rate of 5.9%, slightly lower than the state norm and other CAH counties. While Tama counties unemployment was slightly higher (6.9%). Tama saw a significant decrease in non-employer establishments in 2010 (-18.3%).
- Tama County has a high percentage of births with low birth weight (9.4%) and births occurring to unmarried women (46%). The percentage of births where prenatal care began in the first trimester in Poweshiek is on par with the state and other CAH norms (85.5%)
- Total hospital inpatient discharges in Poweshiek County have remained steady over the past 3 years as have the total hospital inpatient discharges for Poweshiek County Hospital specifically.
- The dollars spent on mental health services dramatically increased in both counties from 2011-2012.
- Both Poweshiek and Tama Counties have high rates of excessive drinking (18% and 23%, respectively). Tama County also has high rates of inadequate social support (19%) and physical inactivity (30%)
- Tama County has a rate of uninsured higher than the state norm (12.3%)
- Cancer, Heart Disease, and Alzheimer's disease are the major causes of mortality for Poweshiek County.
- The percentage of adolescents who are up to date for their immunizations in Poweshiek (7%) is significantly lower.

2013 Health Outcomes - Iowa



Rank 1-25

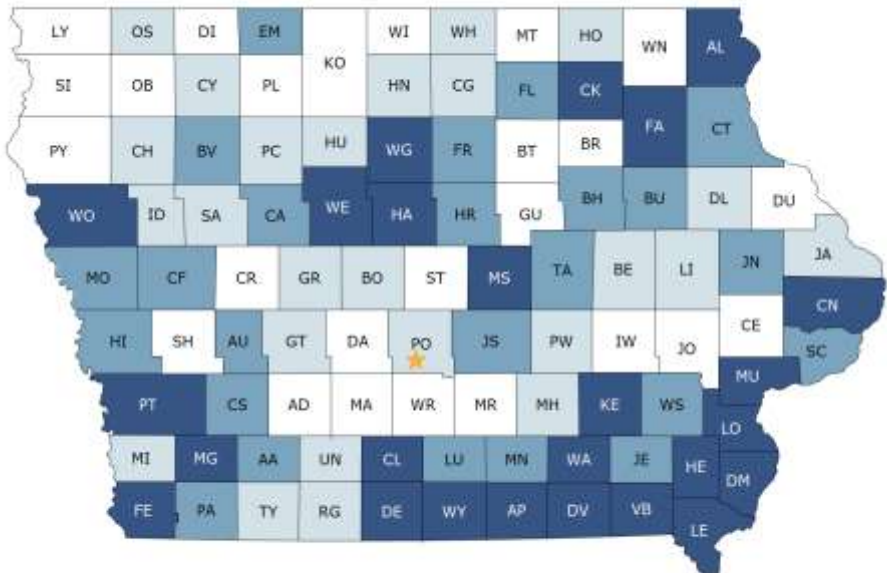
Rank 26-50

Rank 51-74

Rank 75-99



2013 Health Factors - Iowa



Rank 1-25

Rank 26-50

Rank 51-74

Rank 75-99



	Iowa	Poweshiek (PW)	Mahaska (MH)	Tama (TA)
Health Outcomes		25	15	53
Mortality (Length of life)		20	11	27
Premature Death	5,971	5,299	4,732	5,567
Morbidity (Quality of life)		34	43	81
Poor or Fair Health	11%	10%	11%	12%
Poor physical health days	2.8	2.6	2.9	3.0
Poor mental health days	2.7	2.6	2.4	2.3
Low Birthweight	6.9%	6.1%	6.7%	8.3%
Health Factors		32	50	64
Health Behaviors		34	18	41
Adult Smoking	18%	17%	15%	17%
Adult Obesity	29%	31%	28%	26%
Physical Inactivity	25%	26%	30%	30%
Excessive Drinking	20%	17%	9%	28%
Motor vehicle crash death rate	14	18	13	23
Sexually transmitted infections	346	317	340	355
Teen birth rate	32	18	38	38
Clinical Care		17	46	75
Uninsured	11%	10%	11%	14%
Primary care physicians	1,395:1	1,260:1	1,600:1	4,436:1
Dentists	1,823:1	2,566:1	3,843:1	4,536:1
Preventable hospital stays	60	44	56	52
Diabetic screening	89%	89%	85%	91%
Mammography screening	69%	63%	67%	65%
Social & Economic factors		43	66	73
High school graduation	88%	90%	89%	91%
Some college	68%	64%	59%	59%
Unemployment	5.9%	5.9%	6.3%	6.9%
Children in poverty	17%	15%	18%	17%
Inadequate social support	16%	12%	14%	19%
Children in single-parent households	27%	27%	29%	37%
Violent crime rate	280	132	216	210
Physical environment		35	66	53
Daily fine particulate matter	10.3	10.5	10.4	10.6
Drinking water safety	5%	0%	0%	0%
Access to recreational facilities	11	11	13	11
Limited access to healthy foods	6%	5%	8%	7%
Fast food restaurants	43%	32%	48%	39%

2013 Community Health Needs Assessment

Grinnell Regional Medical Center

Primary Service Area

Important CHNA benefits for the sponsoring local hospital and health department, as well as for the community, are as follows:

- 1) Increases knowledge of community health needs and resources.
- 2) Creates a common understanding of the priorities of the community's health needs.
- 3) Enhances relationships and mutual understanding between and among stakeholders.
- 4) Provides a basis upon which community stakeholders can make decisions about how they can contribute to improving the health of the community.
- 5) Provides rationale for current and potential funders to support efforts to improve the health of the community.
- 6) Creates opportunities for collaboration in delivery of services to the community.
- 7) Provides guidance to the hospital and local health department for how they can align their services and community benefit programs to best meet needs.

In late March of 2013, Grinnell Regional Medical Center sponsored / conducted primary research to area residents residing in their primary service area. (Note: 969 randomly selected Poweshiek County / Tama, Toledo and New Sharon Households were sent a confidential CHNA survey, with 539 replies (55.4% response rate). Note: PSA households were encouraged to take CHNA survey online as well.

ZIP	City	County	Sample	Returns	%
50112	GRINNELL	POWESHIEK	521	355	68.1%
52211	BROOKLYN	POWESHIEK	139	31	22.3%
50171	MONTEZUMA	POWESHIEK	113	37	32.7%
50157	MALCOM	POWESHIEK	35	3	8.6%
50242	SEARSBORO	POWESHIEK	19	6	31.6%
52221	GUERNSEY	POWESHIEK	19	2	10.5%
52339	TAMA	TAMA	75	4	5.3%
52342	TOLEDO	TAMA	48	1	2.1%
50207	NEW SHARON	MAHASKA	27	9	33.3%
Others - No Zip given				89	NA
TOTALS			969	537	55.4%

2013 Community Health Needs Assessment Town Hall Community Health Strengths Identified

Health Delivery System - Grinnell Regional PSA N=147

1	Collaboration between agencies	12	Hospice Programs
2	Education	13	Low Crime Rates
3	Faith based community	14	Nursing Homes
4	Family clinics / Primary Care	15	Parks and Recreation Activities
5	Farmers Market (fresh produce)	16	Prenatal Care
6	Fitness options	17	Safety
7	Grinnell College Health	18	School health & wellness
8	GRMC Hospital	19	Trauma
9	HC Transportation	20	Variety of visiting specialist
10	Health Education Programs	21	Volunteerism / Social Support
11	High community involvement	22	Wellness Programs - local firms

Town Hall Community Health Needs Priorities Grinnell Regional Medical Center PSA N=147

#	HC topics cited to either change or improve	Votes	%	Accum
	Total Town Hall Votes	455	100%	
1	Increase Mental Health Services (Need more Providers and Placement)	99	21.8%	21.8%
2	Expand Medicaid	48	10.5%	32.3%
3	Reduce Uninsured	38	8.4%	40.7%
4	Fight Obesity (Increase Fitness / nutrition)	29	6.4%	47.0%
5	Offer Transportation for Health Care	27	5.9%	53.0%
6	Fight Suicide / Depression	26	5.7%	58.7%
7	Provide Affordable Dental Care	20	4.4%	63.1%
8	Recruit Specialists (Ortho, Neuro, Derm)	18	4.0%	67.0%
9	Provide Wellness Education	18	4.0%	71.0%
10	Fight Substance Abuse	17	3.7%	74.7%
11	Provide Access to Free Care Clinic	15	3.3%	78.0%
12	Provide Eating Disorders Education	11	2.4%	80.4%
Note	Other items receiving votes: Underinsured, Ambulance, More school nurses, palliative care, urgent care, Heart Care, Sr Care, teen pregnancy, Ophthalmologist, primary care Tama, vaccination reporting, HC communication and report environment data.			

Community Healthcare Needs Assessment 2013

In your opinion, what areas need additional education or attention in our community? (Check all that apply)	CHNA NORM N = 5927	%	Grinnell Reg PSA N=539	%
l) Obesity	3317	8.4%	287	8.3%
i) Mental Illness	2178	5.5%	275	8.0%
p) Preventative Medicine	2264	5.8%	232	6.7%
x) Wellness Education	2057	5.2%	228	6.6%
k) Nutrition	2255	5.7%	207	6.0%
u) Uninsured	1993	5.1%	202	5.9%
b) Aging (Dementia)	2301	5.8%	189	5.5%
o) Poverty	1715	4.4%	158	4.6%
a) Abuse / Violence	2140	5.4%	156	4.5%
c) Alcohol	2187	5.6%	141	4.1%
n) Pain Management	1495	3.8%	137	4.0%
t) Tobacco Use	1865	4.7%	137	4.0%
d) Alternative Medicine	1317	3.3%	136	4.0%
s) Teen Pregnancy	1922	4.9%	129	3.8%
f) Chronic Diseases	1341	3.4%	126	3.7%
g) Family Planning / Birth Control	1489	3.8%	124	3.6%
r) Suicide	1410	3.6%	112	3.3%
e) Child Care	1242	3.2%	92	2.7%
w) Water Quality	1057	2.7%	81	2.4%
j) Neglect	1192	3.0%	71	2.1%
v) Vaccinations	863	2.2%	70	2.0%
q) Sexually Transmitted Diseases	932	2.4%	56	1.6%
h) Lead Exposure	364	0.9%	44	1.3%
m) Ozone	230	0.6%	17	0.5%
Other (Please Specify)	428	1.1%	32	0.9%
TOTALS	39356	100.0%	3439	100.0%

Community Healthcare Needs Assessment 2013	Poor / Very Poor %		Grinnell Reg N = 539	Not a Problem	Somewhat a Problem	Major Problem	Don't Know	Valid N
	CHNA Norm N=5927							
In your opinion, how much of a problem are the following causes of diseases or disability in your community?								
a) Cancer	55.8%	42.4%		15	200	158	106	373
b) Diabetes	55.1%	48.8%		12	182	185	98	379
c) Drugs / Alcohol	58.4%	42.2%		12	188	146	132	346
d) Heart Disease	48.7%	45.9%		10	187	167	109	364
e) Sexually Transmitted Diseases	18.8%	10.1%		44	126	19	286	189
f) Mental Disorders	35.9%	49.7%		10	165	173	129	348
g) Obesity	62.0%	59.5%		8	166	256	48	430
h) Pneumonia / Flu	17.0%	19.1%		44	260	72	98	376
i) Respiratory Disease	24.1%	21.2%		30	234	71	139	335
j) Stroke	21.1%	12.8%		24	236	38	175	298
k) Suicide	18.2%	18.5%		31	185	49	209	265
l) Trauma	13.2%	11.5%		38	192	30	211	260

Community Healthcare Needs Assessment 2013				
In general, how would you best describe your health? (Choose One)	CHNA NORM N=5927	%	Grinnell Reg PSA N=539	%
Top 2 Boxes		83.3%		
Very Good	1352	25.4%	150	90.0%
Good	3078	57.9%	280	31.4%
Fair	775	14.6%	42	58.6%
Poor	94	1.8%	5	8.8%
Very Poor	21	0.4%	1	1.0%
Totals	5320		478	0.2%

Community Healthcare Needs Assessment 2013				
Have you had a physical in the past 12 months?	CHNA NORM (17) N=6633	%	Grinnell Reg N=539	%
Yes	4445	76.2%	373	78.4%
No	1388	23.8%	103	21.6%
Totals	5833		476	0.0%

Community Healthcare Needs Assessment 2013				
Compared to a year ago, how would you rate your overall health in general now?	CHNA NORM (17) N=6633	%	Grinnell Reg N=539	%
Much better than a year ago	678	11.5%	56	11.7%
About the same	4981	84.5%	411	86.2%
Much worse than a year ago	235	4.0%	10	2.1%
Totals	5894	100.0%	477	100.0%

Community Healthcare Needs Assessment 2013				
Do you follow these health practices?	CHNA NORM (17) N=6633	% Yes	Grinnell Reg N=539	%
If over 50, have you had a colonoscopy?	1759	60.3%	174	67.4%
If male over 50, do you have annual prostate exams?	678	54.0%	75	58.6%
If female over 40, do you have annual mammograms?	1870	66.4%	210	76.4%
If female, do you have a pap smear every other year?	2067	59.6%	259	79.4%
Do you get 2.5 hours a week of moderately intense physical activity?	2473	53.9%	310	65.1%

Community Healthcare Needs Assessment 2013				
Are you....?	CHNA NORM (17) N=6633	% Yes	Grinnell Reg N=539	%
Eating right daily (fruits/vegs/breads)	2398	56.7%	280	59.8%
Using tobacco products weekly	430	10.2%	34	7.6%
Exercising 2-3 times weekly	2546	56.1%	334	71.2%
Consuming Alcohol more than one drink daily	340	5.7%	47	10.2%
Receiving an annual flu shot	2807	66.6%	379	79.8%

Community Healthcare Needs Assessment 2013	Poor / Very Poor %					Valid N			
	CHNA Norm (17) N=6633	Grinnell Reg N = 539	Very Good	Good	Fair				
How well do you feel our local health care providers are doing in addressing the health needs of the following age groups?									
Infants	6.9%	4.4%	117	141	49	8	6	126	321
Age 1-12	5.3%	4.1%	118	156	52	7	7	117	340
Age 13-17	5.5%	5.6%	94	155	55	11	7	132	322
Age 18-44	5.4%	4.4%	98	208	61	11	6	74	384
Age 45-64	6.0%	3.2%	104	195	63	8	4	90	374
Age 65-84	8.9%	5.5%	104	172	68	14	6	97	364
Over 85	11.2%	7.6%	88	146	69	17	8	131	328

Community Healthcare Needs Assessment 2013

In general, how would you rate the overall quality of the healthcare delivered to your community?	CHNA NORM N=5927	%	Grinnell Reg PSA N=539	%
Top 2 Boxes		80.4%		86.1%
Very Good	1771	31.2%	187	35.6%
Good	2791	49.2%	266	50.6%
Fair	909	16.0%	58	11.0%
Poor	165	2.9%	9	1.7%
Very Poor	36	0.6%	6	1.1%
Totals	5672		526	

Community Healthcare Needs Assessment 2013

Over the past 2 years, did you or your household receive health care services outside of your county?	CHNA NORM (17) N=6633	%	Grinnell Reg N=539	%
Yes	3597	59.7%	302	61.0%
No	2430	40.3%	193	39.0%
Totals	6027		495	0.0%

Community Healthcare Needs Assessment 2013

Does your community need any additional healthcare providers?	CHNA NORM (17) N=6633	%	Grinnell Reg N=539	%
Yes	3061	60.8%	287	70.3%
No	1977	39.2%	121	29.7%
Totals	5038		408	0.0%

Community Healthcare Needs Assessment 2013

Do you have a personal healthcare provider you use for primary care?	CHNA NORM (17) N=6633	%	Grinnell Reg N=539	%
Yes	5149	89.0%	432	92.3%
No	637	11.0%	36	7.7%
Totals	5786		468	0.0%

Community Healthcare Needs Assessment 2013		Poor / Very Poor %								
How satisfied are you with each of the following...?		CHNA Norm N=5927	Grinnell Reg N = 539	Very Good	Good	Fair	Poor	Very Poor	N/A	Valid N
a)	Ambulance Service	3.1%	6.3%	118	133	45	6	14	188	316
b)	Child Care	9.3%	4.9%	72	117	63	11	2	234	265
c)	Chiropractor	4.3%	1.3%	127	137	33	1	3	199	301
d)	Dentists	7.5%	2.5%	237	191	35	10	2	34	475
e)	Emergency Room	7.9%	3.9%	182	185	77	12	6	44	462
f)	Eye Doctor / Optometrist	5.6%	1.9%	203	174	45	3	5	76	430
g)	Family Planning Services	14.1%	14.2%	49	93	45	27	4	278	218
h)	Home Health	7.1%	3.6%	124	109	32	6	4	230	275
i)	Hospice	4.9%	1.4%	176	94	19	2	2	207	293
j)	Inpatient Services	5.1%	2.6%	155	175	39	6	4	120	379
k)	Mental Health Services	28.8%	44.6%	27	56	90	74	65	178	312
l)	Nursing Home	12.3%	4.5%	90	137	67	11	3	189	308
m)	Outpatient Services	4.0%	3.4%	149	204	42	8	6	88	409
n)	Pharmacy	2.1%	2.0%	193	206	50	6	3	44	458
o)	Primary Care	4.4%	4.4%	181	190	63	14	6	42	454
p)	Public Health Department	5.5%	5.5%	106	131	57	8	9	185	311
q)	School Nurse	7.6%	9.1%	58	99	52	14	7	262	230
r)	Specialist Physician Care	9.3%	11.0%	112	165	70	27	16	103	390

Finalized list of Community Needs

1. Obesity

2. Mental

3. Preventative Care

4. Wellness Education

5. Nutrition

6. Access to Care

7. Urgent Care

8. Insurance

9. Quality of Care

10. Transportation

Community Health Improvement Goals 2013-2016

From the Results list, the CHNA task force selected four areas to target over the next 3 years to improve the health of Poweshiek County residents.

Identified Categories of Need and Proposed Action Plan:

Mental Health Needs

- More provider availability -Additional providers will be in place as identified by GRMC.
- After office hours assistance - Crisis line available as well as ER.
- Inpatient care -Form a working committee with surrounding counties
- Preventative Care - A community mental health task force will be formed.

Obesity/Nutrition Needs

- Additional Education - Community Transformation Grant (CTG) funds will be used to encourage restaurants to offer healthy options, healthy vending in businesses, and ads for healthy choices in local papers.
- Availability of whole foods
 - Encourage healthy labeling of produce in grocery stores to encourage consumers to purchase.
 - Make whole foods available in food pantries.
- Encourage Exercise - Increase involvement with Live Healthy Iowa Program with an increase of 10% in participation each year.
- Seek grant funding for obesity prevention

Preventative Care and Wellness Education

- Start preventative care and nutrition education at young age.
 - Education will be delivered to families with children on preventative care issues such as obesity, mental health, and nutrition.
- Get local produce to consumer and educate on healthy preparation
 - GRMC Babies Room parenting classes will have two classes focused on nutrition education.
 - A Food Systems Assessment will be completed by the CTG staff with the results producing goals for Poweshiek County.
 - Increase adolescent immunization rate from 7% to 30%
 - Begin a breastfeeding support group for the community.
 - Continue to sponsor and participate in Health Fairs in the community.

Access to Care: Medical and Dental

- Connecting residents with available payer sources and funding availability for medical care.
 - Marketplace Insurance Counselors will be available to residents by appointment to assist in obtaining affordable insurance.
- Lack of providers in community for those without insurance or a medical home
 - Urgent care clinic will opened for service for the GRMC service area.
- Transportation to medical appointments in the community and outside of the community.
 - A resource directory with all resources for transportation in the community will be available as an education tool .
 - A transportation meeting will be held with stakeholders such as Region 6 to discuss affordable transportation options for the community.

Conclusion for Community Needs Assessment

Grinnell Regional Public Health would like to thank all those who assisted in any way to gather information and form a plan. Now that the assessment is finished, the Poweshiek County community may implement the goals that were proposed by the work groups. The plan and goals are an ever changing document that the community will help to implement in the next 3 years.

If there are any questions or comments that you would like to communicate, you may call Grinnell Regional Public Health at 641-236-2385.



Secondary Research Resources

- Robert Woods Johnson County Health Rankings and Roadmaps
www.countyhealthrankings.org/iowa
- U.S. Census Quick Facts - <http://quickfacts.census.gov>
- Iowa County Health Snapshots
www.idph.state.ia.us/DWH/Snapshots.aspx
- 2011 Iowa Health Fact Book (PDF)
- Kids Count Data
<http://datacenter.kidscount.org/data/bystate/StateLanding.aspx?state=IA>
- Diabetes and Obesity Data - <http://diabetes-obesity.findthedata.org>
- Vital Statistics: Maternal and Infant Health Profile, 2010 (PDF)
- Iowa DOH Immunization Annual Report 2011 (PDF)
- Division of Mental Health and Disability Services (MHDS) County Service Data
www.dhs.state.ia.us/mhdd/statistical_info/county_dataservices.html